

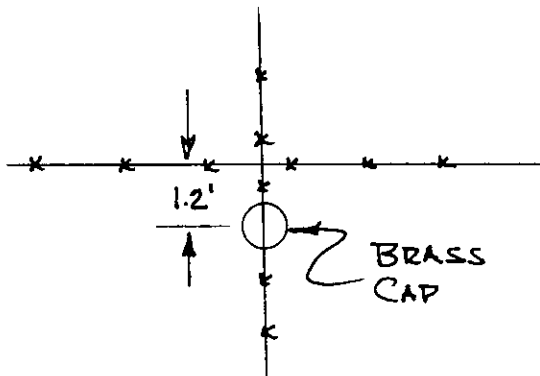
State of Wyoming Corner Record

(In compliance with the *CORNER PERPETUATION AND FILING ACT*, Wyoming Statutes, 1997 Section 33-29-140 et. seq., and the Rules and Regulations of the Board of Professional Engineers and Professional Land Surveyors)

Reverse side of this form may be used if more space is needed.

Record of original survey and citation of source of historical information (if corner is lost or obliterated). Description of corner monumentation evidence found and/or monument and accessories established to perpetuate the location of this corner. Sketch of relative location of monument, accessories, and reference points with course and distance to adjacent corner(s) (if determined in this survey). Method and rationale for re-establishment of lost or obliterated corner.

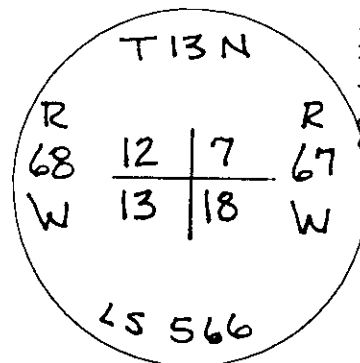
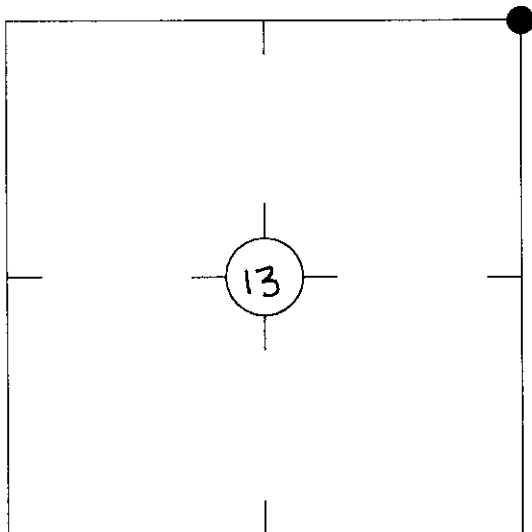
2.0 INCH BRASS CAP ON
2.0 INCH GALVANIZED PIPE.
WHICH IS 1.2 FEET SOUTH
OF NORTH-SOUTH-EAST-WEST
FENCE CORNER.



Project Coordinate: North 219693.65

Project Coordinate: East 717597.01

Monument location



Monument Inscription

LARAMIE COUNTY CLERK
 CHEYENNE, WY
 1999 APR - 7 PM 1:03
249018

Date of Field Work: AUG. 15, 1998

Office Reference: ME841825, PT. 1178

Cross Index Plat

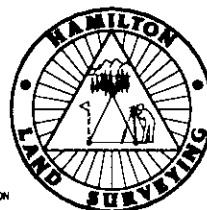
	1	2	3	4	5	6	7	8	9	10	11	12	13	14	15	16	17	18	19	20	21	22	23	24	25	
A																										
B																										
C		6		5		4		3		2		1														
D																										
E																										
F																										
G			7		8		9		10		11		12													
H																										
J																										
K																										
L			18		17		16		15		14		13													
M																										
N																										
O																										
P			19		20		21		22		23		24													
Q																										
R																										
S																										
T			30		29		28		27		26		25													
U																										
V																										
W																										
X			31		32		33		34		35		36													
Y																										
Z																										

Firm/Agency, Address

this corner record provided by:
**HAMILTON
LAND
SURVEYING**

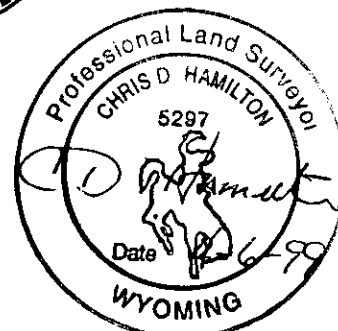
102 West Ramahom, Ste.201
Dubois, WY: 307-455-2070

A WYOMING COMPANY PROVIDING:
COMMERCIAL - RESIDENTIAL - INDUSTRIAL
OIL & GAS - WATER RIGHTS - CONSTRUCTION
AND SUBDIVISION LAND SURVEYING SERVICES



This corner record was prepared
by me or under my direction
and supervision.

SEAL & SIGNATURE



County: LARAMIE, Wyoming

Corner Name: NORTHEAST, Section: 13, T13N, R68W, 6TH P.M., Cross-Index No.: J-25

SBRPEPLS/PLSW: March 1994; PLSW January 1998